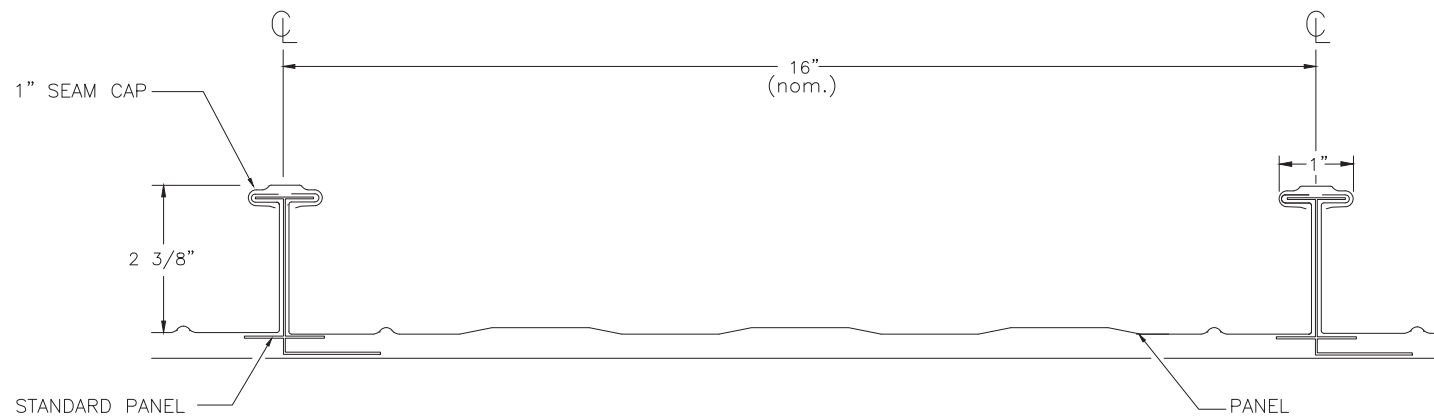
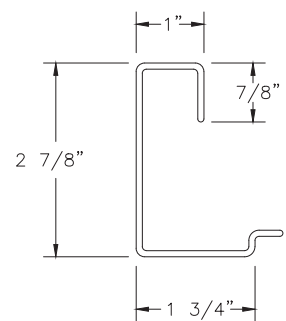


LAKE LAND COLLEGE-FIELD HOUSE

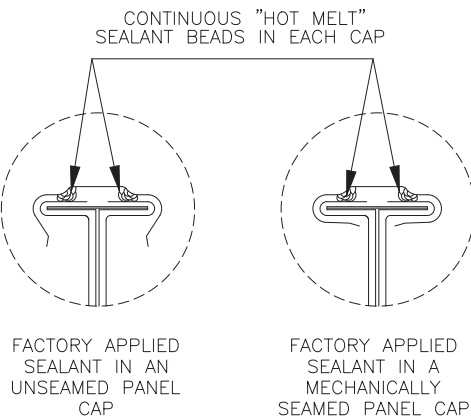
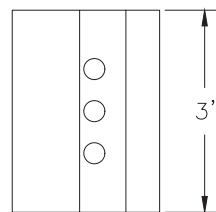
5009 LAKE LAND BLVD., MATTON, IL 61938



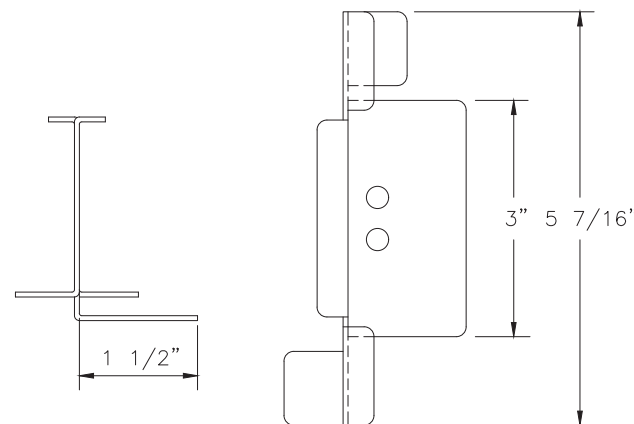
TYPICAL RMS-16 PANEL PROFILE



#3007GS GABLE CLIP
GALVANIZED STEEL



"HOT MELT" SEALANT BEADS
FACTORY APPLIED



#301016GS STD. CLIP
GALVANIZED STEEL

R-MER SPAN PANEL AND ACCESSORIES

SPECIAL NOTES:

R-MER SPAN PANEL NOTES:

- FOR ADDITIONAL R-MER SPAN INSTALLATION INSTRUCTIONS, CONTACT GARLAND FOR AN INSTALLATION GUIDELINES MANUAL.
- ALL PANEL CLIPS ARE TO BE FASTENED USING (2) TWO #14-13 DP1, CONCEALOR TYPE, SELF-TAPPING FASTENERS WITH AN ULTIMATE PULLOUT VALUE OF: 623# PER FASTENER INTO MIN. 18GA HAT CHANNELS OVER ENTIRE ROOF.
- ROOF PANELS ARE TO BE FIELD SEALED BY ERECTOR WITH GARLAND'S ELECTRIC SEAMER. REFERENCE INSTALLATION MANUAL AND/OR OPERATING INSTRUCTIONS PROVIDED WITH SHIPMENT OF SEAMER.

GENERAL NOTES:

ATTENTION: ARCHITECT, G/C, & SUB-CONTRACTOR

THESE SHOP DRAWINGS HAVE BEEN SUBMITTED FOR ARCHITECT, GENERAL CONTRACTOR AND SUB-CONTRACTOR APPROVAL. ALL OF GARLAND'S SHOP FABRICATED MATERIAL WILL BE MANUFACTURED TO THE DIMENSIONS SHOWN UNLESS OTHERWISE NOTED. IT IS CRUCIAL THAT ANY NECESSARY CHANGES, NOTATIONS OR REQUESTED INFORMATION BE CLEARLY NOTED.

*APPROVAL STAMPS/SIGNATURES ATTACHED AT RIGHT.

ARCHITECT APPROVAL

G/C APPROVAL

SUB-CONTRACTOR APPROVAL

STORAGE NOTE:
ALWAYS STORE ALL COMPONENTS IN A CLEAN, DRY STORAGE AREA. PREVENT CONTACT WITH CORROSIVE OR STAINING MATERIALS.

MATERIAL NOTE:
SOME OIL CANNING OF PANELS IS COMMON IN THE INDUSTRY AND IS NOT CONSIDERED CAUSE FOR PRODUCT REJECTION.

SEALANT NOTE:
USE A CONTINUOUS BEAD OF NON-HARDENING, HIGH QUALITY SEALANT COMPATIBLE WITH KYNAR AND POLYESTER FINISHES. FOR FORMED COPING, EXTENDERS, FASCIA AND WALL CAPS, APPLY SEALANT BEAD TO THE CONCEALED PORTION OF THE SPLICE PLATE. (SEALANT BY ERECTOR)



IMPORTANT CUSTOMER NOTE:
PLEASE READ AND SIGN BELOW

- 1) ALL OF GARLAND'S SHOP FABRICATED MATERIAL WILL BE MANUFACTURED TO THE DIMENSIONS SHOWN UNLESS OTHERWISE NOTED.
- 2) IT IS CRUCIAL THAT ANY NECESSARY CHANGES, NOTATIONS OR REQUESTED INFORMATION BE CLEARLY NOTED ON THE SHOP DRAWINGS AND RETURNED TO GARLAND FOR REVIEW.
- 3) EACH DIMENSION MARKED WITH AN (*) MUST BE APPROVED FOR FABRICATION BY INDICATING THE RESPONSE "OK" OR "✓", OR BY NOTING THE CORRECT DIMENSION.
- 4) WHERE GARLAND SPECIFICALLY REQUESTS TO "FIELD VERIFY" OR "SPECIFY" A DIMENSION, THE PROPER CUSTOMER RESPONSE WILL BE TO:
 - A) MARK WITH EITHER "OK" OR "✓" IF THE DIMENSION IS CORRECT.
 - OR
 - B) NOTE THE CORRECT DIMENSION.
 IT IS IMPERATIVE THAT FIELD DIMENSIONS ARE TAKEN TO INSURE ACCURATE FABRICATION AND PROPER MATERIAL FIT.
- 5) NO MATERIAL WILL BE CONSIDERED RELEASED FOR FABRICATION UNTIL ALL PERTINENT INFORMATION (I.E., COLOR, DIMENSIONS, MATERIAL CONFIGURATION) HAS BEEN RECEIVED BY GARLAND.
- 6) GARLAND MUST HAVE 'APPROVED' SHOP DRAWINGS WITH AUTHORIZATION TO RELEASE THE MATERIAL FOR FABRICATION AS INDICATED BY A CUSTOMER AUTHORIZATION SIGNATURE.
- 7) INDICATE THE DATE MATERIALS WILL BE REQUIRED AT THE PROJECT LOCATION:

CUSTOMER AUTHORIZATION SIGNATURE: _____

(sign here)

DATE: _____

(date here)

ERECTOR NOTE:

- STEEL PANELS: SAW OR TORCH CUTS ARE NOT ALLOWED. ONLY SHEARING ACTION MAY BE USED, AS ACHIEVED WITH HAND SNIPS/SHEARS OR ELECTRIC SHEARS
- ALUMINUM PANELS: TORCH CUTS ARE NOT ALLOWED. SHEARING ACTION RECOMMENDED TO CUT ALUMINUM. SAW CUTS PERMITTED, HOWEVER, CARE MUST BE TAKEN TO PREVENT BURNING PAINT FINISH, EDGE BURS AND SAW DEBRIS BEING DEPOSITED ON FINISHED PRODUCT.
- ALL PANELS, BATTENS AND SEAMS TO HAVE FIELD BENT TRANSITIONS. (EXAMPLE: CHANGE OF PLANE)
- ALL RELATED PANEL TRIM TO HAVE FIELD TRANSITIONS AND FIELD FABRICATED MITERS. (EXAMPLE: TRANSITION BETWEEN RIDGE TO RAKE TRIM OR RAKE TO VERTICAL CORNER TRIM) (EXAMPLE: MITERS - 90° CORNERS FOR SILL TRIM)
- ALL CONTINUOUS LENGTHS OF PANEL TRIM TO BE NOTCHED, LAPPED AND SEALED 3" MINIMUM AT LAP SPLICES. (TYPICAL)
- PANEL TRIM'S THERMAL MOVEMENT OCCURS AT LAP SPLICES DO NOT ANCHOR TRIM AT LAP SPLICES. (TYPICAL)

REV: 1	DATE: 02/18/25
2	DATE: --/--/--
3	DATE: --/--/--
4	DATE: --/--/--

CUSTOMER: NA
AGENT: RYAN BENSON

LAKE LAND COLLEGE-FIELD HOUSE
5009 LAKE LAND BLVD., MATTON, IL 61938

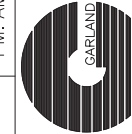
ARCHITECT: NA

DATE: 01/06/25

MEC

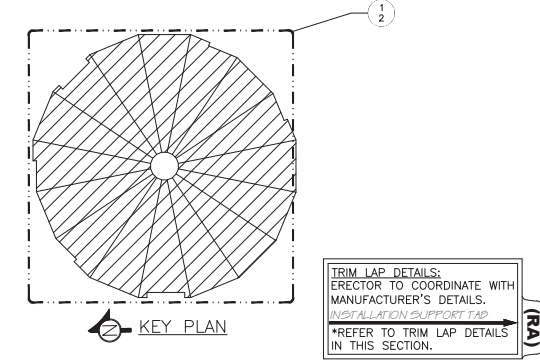
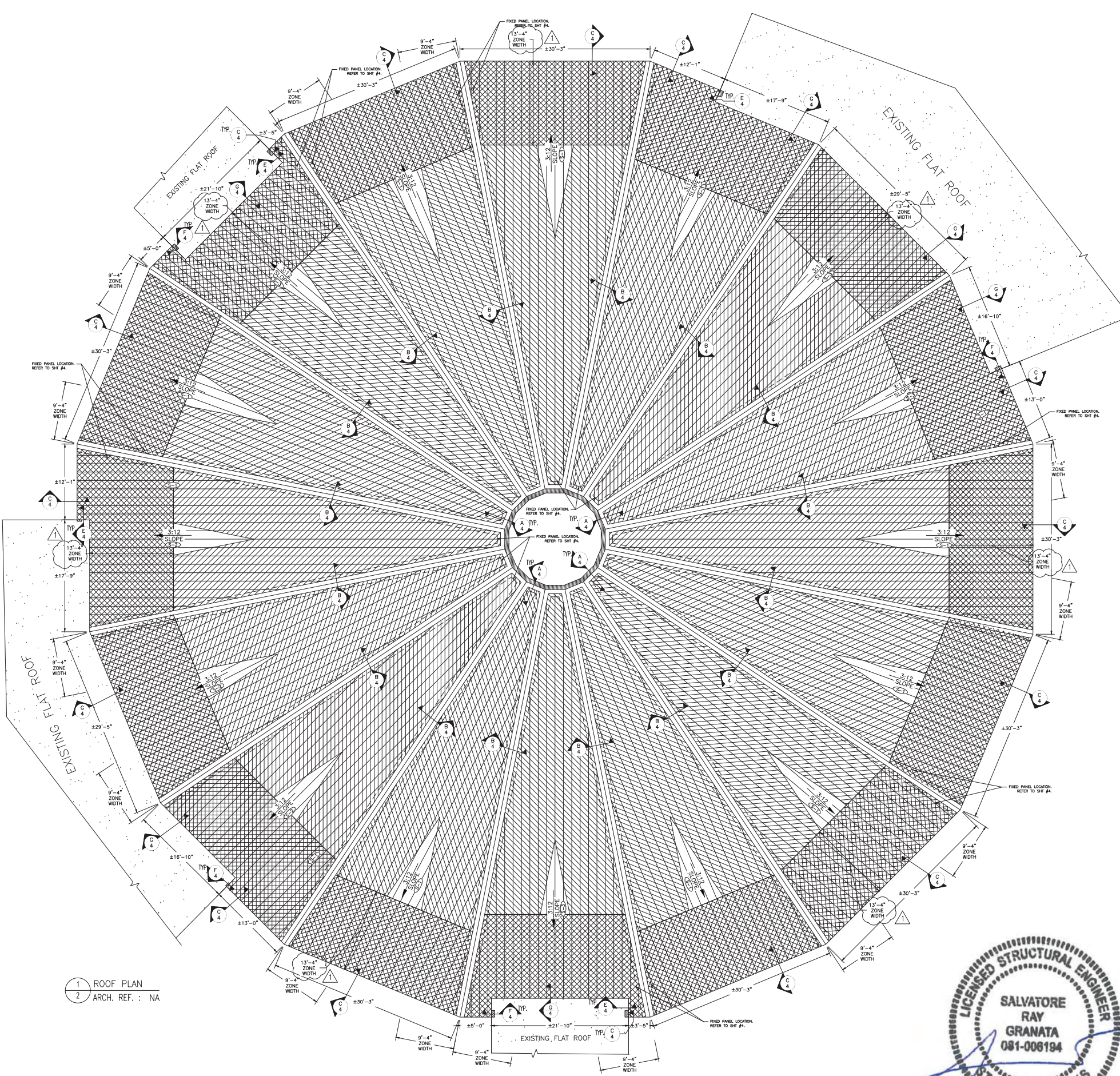
CHK BY: --

Salvatore R. Granata, P.E., S.E.
146 Lee Road 2012
Opelika, AL 36804
Phone: (878) 367-3151
Fax: (866) 815-4882
Toll Free: (877) 946-5726
salvatore.com



THE GARLAND COMPANY INC.
3800 EAST 91st STREET - CLEVELAND, OHIO 44105-2197
PHONE (800) 321-9336 / FAX (216) 641-0633





SMACNA GUIDELINES:
GARLAND RECOMMENDS FOLLOWING SMACNA GUIDELINES FOR THE SIZING AND LOCATION OF GUTTERS, DOWNSPOUTS, AND EXPANSION JOINTS.

ERECTOR NOTE:
ALL MATERIAL SUPPLIED IS 22GA GALV. STEEL.
ALL TRIM COMPONENTS ARE TO BE FABRICATED BY THE ERECTOR FROM FLAT SHEET SUPPLIED.

PANEL CLIP SPACING

PROVIDED BELOW ARE THE **MAXIMUM** ALLOWABLE ROOF PANEL CLIP SPACINGS.

ROOF PANEL CLIPS MAY BE INSTALLED CLOSER TOGETHER THAN THE ALLOWABLE O.C. MAXIMUMS IF JOB-SITE CONDITIONS REQUIRE. HOWEVER, PANEL CLIPS MUST "NOT" EXCEED THE MANUFACTURER'S PROVIDED O.C. MAXIMUMS.

ASCE 7-16 COMPONENTS and CLADDING - METHOD 2

BASIC WIND SPEED: 114MPH WIND IMPORTANCE FACTOR (I): III(1.0)
WIND EXPOSURE: C INTERNAL PRESSURE COEFFICIENT: ±0.18

ZONE DESIGNATION:	ZONE TYPE:	DESCRIPTION:	ROOF PRESSURES:	CLIP SPACING:
	ZONE 1	(Field of Roof)	25.2 PSF	5'-0" o.c. MAX.
	ZONE 2r	(Hip & Head)	44.0 PSF	4'-3" o.c. MAX.
	ZONE 2e & 3	(Eave)	33.8 PSF	5'-0" o.c. MAX.

FIXED PANEL CLIP LOCATIONS:

LINE TYPE:	DESCRIPTION:	EXPLANATION:
---	PANEL LOCATION	DESIGNATES A ROW OF 'FIXED' PANEL CLIPS.

SUBSTRATE LENGTH SCHEDULE:

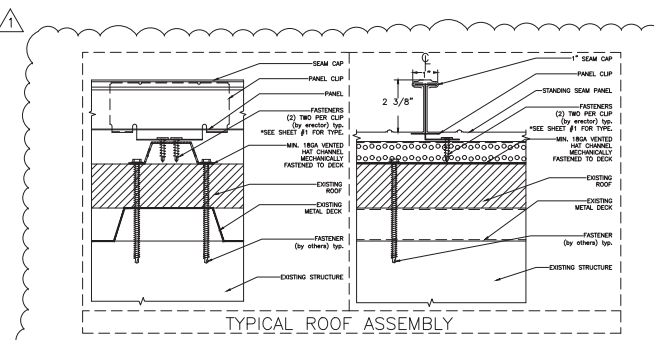
PROVIDED BELOW ARE ESTIMATED SUBSTRATE LENGTHS (NOT PANEL LENGTHS), AS PROVIDED TO GARLAND OR AS SCALED BY GARLAND FROM CONSTRUCTION DRAWINGS.

- THESE SUBSTRATE LENGTHS ARE PROVIDED FOR REVIEW AND **MUST BE FIELD VERIFIED.**
- ERECTOR MUST THEN REFERENCE THE APPROPRIATE DETAILS WITHIN THE SHOP DRAWINGS TO CALCULATE THE CORRECT ROOF PANEL LENGTHS REQUIRED. YOU MAY NOTE THESE CALCULATED PANEL LENGTHS IN THE SPACES PROVIDED BELOW.
- ERECTOR TO COORDINATE JOB SITE CONDITIONS WITH SHOP DRAWING DETAILS TO DETERMINE REQUIRED PANEL QUANTITIES AND LENGTHS. THIS ITEMIZED CUT IS TO BE FORWARDED TO GARLAND FOR MATERIAL RELEASE AND PRODUCTION.

DO NOT USE THE SUBSTRATE LENGTHS AS THE PANEL LENGTHS!

SUBSTRATE DESIGNATION:	SUBSTRATE LENGTH:	CALCULATE:	REQUIRED PANEL LENGTHS:
(1)	±70'-2"	NOTE: Use the shop drawing details to adjust the substrate length dimension to the panel length required.	=
(2)	±68'-1"		=
(3)	±67'-1"		=
(4)	---		=
(5)	---		=
(6)	---		=
(7)	---		=
(8)	---		=
(9)	---		=
(10)	---		=

IMPORTANT READ:
THE ERECTOR HAS THE SOLE RESPONSIBILITY TO COORDINATE THE SHOP DRAWINGS WITH THE ACTUAL JOB SITE CONDITIONS TO DETERMINE AN ACCURATE AND ITEMIZED MATERIAL "CUT LIST". THIS IS CRUCIAL FOR MATERIAL RELEASE AND PANEL PRODUCTION.



1 ROOF PLAN
2 ARCH. REF.: NA

ALL ROOF DIMENSIONS MUST BE FIELD VERIFIED



LAKE LAND COLLEGE-FIELD HOUSE
5009 LAKE LAND BLVD., MATTON, IL 61938

ARCHITECT: NA
DATE: 01/06/25
DWG BY: MEC
CHK BY: --

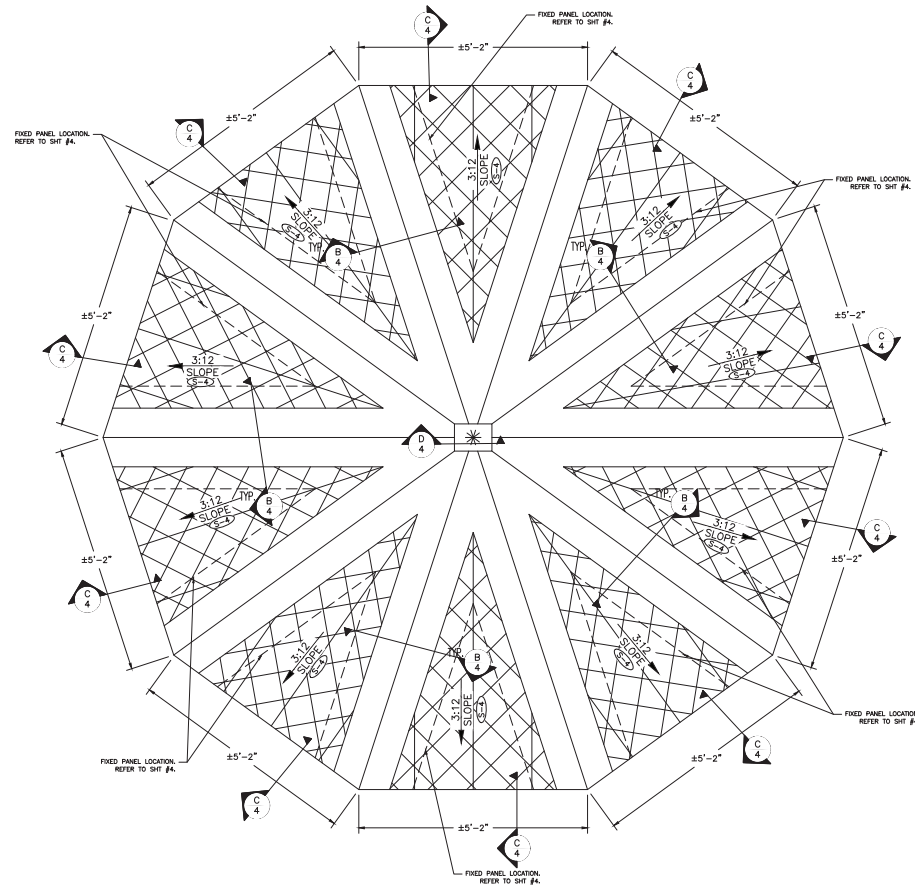
PM: AMANDA TANT
CUSTOMER: RYAN BENSON
AGENT: RYAN BENSON

DATE: 02/18/25
DATE: --/--/--
DATE: --/--/--
DATE: --/--/--

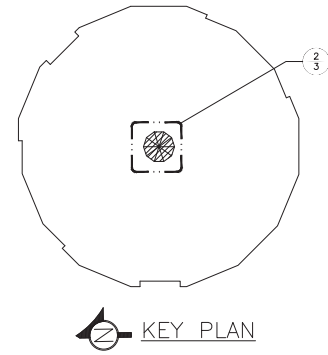
Salvatore R. Granata, P.E., S.E.
146 Lee Road 2012
Opelika, AL 36804
Phone: (878) 367-3151
Fax: (866) 815-4882
Toll Free: (877) 846-5126
salvatore@rsg.com

THE GARLAND COMPANY INC.
3800 EAST 91st STREET - CLEVELAND, OHIO 44105-2197
PHONE (800) 321-9336 / FAX (216) 641-0633

SHEET: 2 OF 5 JOB NUMBER: 40257



2 ROOF PLAN
3 ARCH. REF. : NA



TRIM LAP DETAILS:
ERECTOR TO COORDINATE WITH
MANUFACTURER'S DETAILS.
*REFER TO TRIM LAP DETAILS
IN THIS SECTION.

SMACNA GUIDELINES:
GARLAND RECOMMENDS FOLLOWING SMACNA
GUIDELINES FOR THE SIZING AND LOCATION OF
GUTTERS, DOWNSPOUTS, AND EXPANSION JOINTS.

ERECTOR NOTE:
ALL MATERIAL SUPPLIED IS 22GA GALV. STEEL.
ALL TRIM COMPONENTS ARE TO BE FABRICATED BY
THE ERECTOR FROM FLAT SHEET SUPPLIED.

PANEL CLIP SPACING

PROVIDED BELOW ARE THE MAXIMUM ALLOWABLE ROOF PANEL CLIP SPACINGS.
ROOF PANEL CLIPS MAY BE INSTALLED CLOSER TOGETHER THAN THE ALLOWABLE O.C. MAXIMUMS IF JOB-SITE CONDITIONS REQUIRE. HOWEVER, PANEL CLIPS MUST NOT EXCEED THE MANUFACTURER'S PROVIDED O.C. MAXIMUMS.

ASCE 7-16 COMPONENTS and CLADDING - METHOD 2

BASIC WIND SPEED: 114MPH WIND IMPORTANCE FACTOR (I): III(1.0)
WIND EXPOSURE: C INTERNAL PRESSURE COEFFICIENT: ±0.18

ZONE DESIGNATION:	ZONE TYPE:	DESCRIPTION:	ROOF PRESSURES:	CLIP SPACING:
□	ZONE 1	(Field of Roof)	25.2 PSF	5'-0" o.c. MAX.
▨	ZONE 2r	(Hip & Head)	44.0 PSF	4'-3" o.c. MAX.
▩	ZONE 2e & 3	(Eave)	33.8 PSF	5'-0" o.c. MAX.

FIXED PANEL CLIP LOCATIONS:

LINE TYPE:	DESCRIPTION:	EXPLANATION:
---	PANEL FIXED LOCATION	DESIGNATES A ROW OF 'FIXED' PANEL CLIPS.

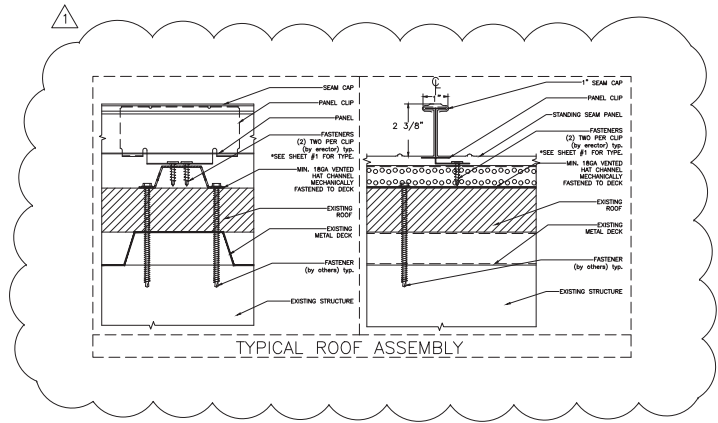
SUBSTRATE LENGTH SCHEDULE:

- PROVIDED BELOW ARE ESTIMATED SUBSTRATE LENGTHS (NOT PANEL LENGTHS), AS PROVIDED TO GARLAND OR AS SCALED BY GARLAND FROM CONSTRUCTION DRAWINGS.
- THESE SUBSTRATE LENGTHS ARE PROVIDED FOR REVIEW AND MUST BE FIELD VERIFIED.
- ERECTOR MUST THEN REFERENCE THE APPROPRIATE DETAILS WITHIN THE SHOP DRAWINGS TO CALCULATE THE CORRECT ROOF PANEL LENGTHS REQUIRED. YOU MAY NOTE THESE CALCULATED PANEL LENGTHS IN THE SPACES PROVIDED BELOW.
- ERECTOR TO COORDINATE JOB SITE CONDITIONS WITH SHOP DRAWING DETAILS TO DETERMINE REQUIRED PANEL QUANTITIES AND LENGTHS. THIS ITEMIZED CUT IS TO BE FORWARDED TO GARLAND FOR MATERIAL RELEASE AND PRODUCTION.

DO NOT USE THE SUBSTRATE LENGTHS AS THE PANEL LENGTHS!

SUBSTRATE DESIGNATION:	SUBSTRATE LENGTH:	CALCULATE:	REQUIRED PANEL LENGTHS:
S-A	±7'-10"	NOTE: Use the shop drawing details to adjust the substrate length dimension to the panel length required.	==
○	---		==
○	---		==
○	---		==
○	---		==
○	---		==
○	---		==
○	---		==
○	---		==
○	---		==
○	---		==

IMPORTANT READ:
THE ERECTOR HAS THE SOLE RESPONSIBILITY TO COORDINATE THE SHOP DRAWINGS WITH THE ACTUAL JOB SITE CONDITIONS TO DETERMINE AN ACCURATE AND ITEMIZED MATERIAL 'CUT LIST'. THIS IS CRUCIAL FOR MATERIAL RELEASE AND PANEL PRODUCTION.



02/19/25

ALL ROOF DIMENSIONS MUST BE FIELD VERIFIED

LAKE LAND COLLEGE-FIELD HOUSE
5009 LAKE LAND BLVD., MATTON, IL 61938

ARCHITECT: NA
DATE: 01/06/25
DWG BY: MEC
CHK BY: --

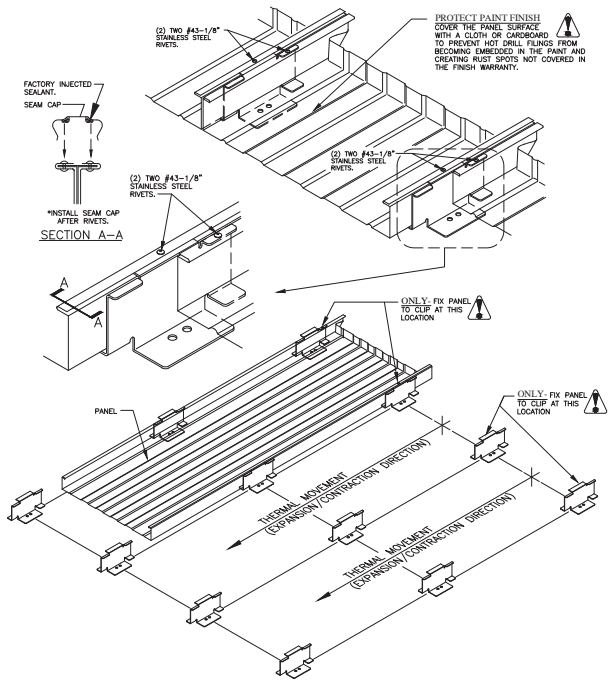
PM: AMANDA TANT
CUSTOMER: NA
AGENT: RYAN BENSON

DATE: 02/18/25
DATE: --/--/--
DATE: --/--/--
DATE: --/--/--

Salvatore R. Granata, P.E., S.E.
146 Lee Road 2012
Opelika, AL 36804
Phone: (878) 367-3151
Fax: (866) 815-4882
Toll Free: (877) 946-5726
salvatore@ra.com

THE GARLAND COMPANY INC.
3800 EAST 91st STREET - CLEVELAND, OHIO 44105-2197
PHONE (800) 321-9336 / FAX (216) 641-0633

SHEET: 3 OF 5 JOB NUMBER: 40257



RECTOR NOTE: FIXED PANEL INSTALLATION METHOD

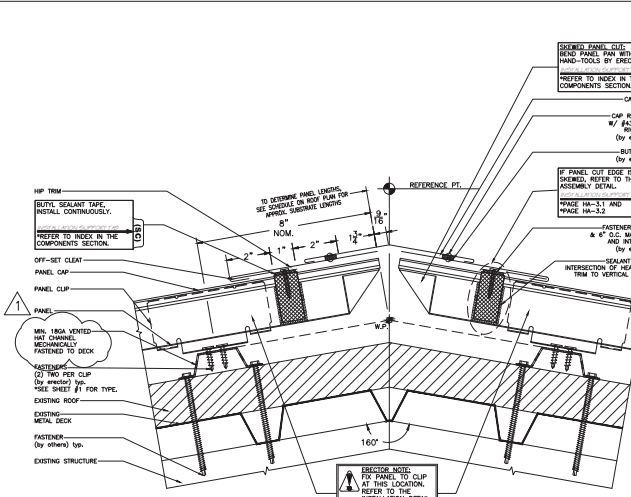
- TYPICALLY, PANELS ARE TIGHT ALONG THE RIDGE/HIP/PAD CONDITIONS AND PANEL THERMAL MOVEMENT IS DIRECTED TOWARD THE SAFE/DRAINLET CONDITIONS.
- FIX (MECHANICAL ATTACHED) PANELS TO CLIPS AS SHOWN.
- PROTECT THE PANELS PAINT FINISH FROM HOT DRILL FLAMES. THESE FLAMES WILL BECOME SELF-EMBEDDED IN THE PAINT AND CREATE RUST SPOTS NOT COVERED IN THE FINISH WARRANTY.
- DO NOT ATTACH EACH PANEL CLIP TO THE PANEL.
- THE PANEL MUST BE FIXED (MECHANICAL ATTACHED) AT ONE LOCATION AND ALL REMAINING PANEL CLIPS ALONG THE PANEL MUST NOT BE ATTACHED.
- SNAP ON THE SEAM CAP AFTER THE PANEL HAS BEEN RIVETED TO THE PANEL CLIPS. SEE DRAWING.
- USE THE HAND CRIMPING TOOL AND CRIMP THE SEAM CAPS AT THESE FIXED LOCATIONS.
- DO NOT RUN THE MOTORIZED ELECTRIC SEAMING MACHINE OVER THESE FIXED LOCATIONS.

RECTOR NOTE: FIXED PANEL LOCATION EXPLANATION

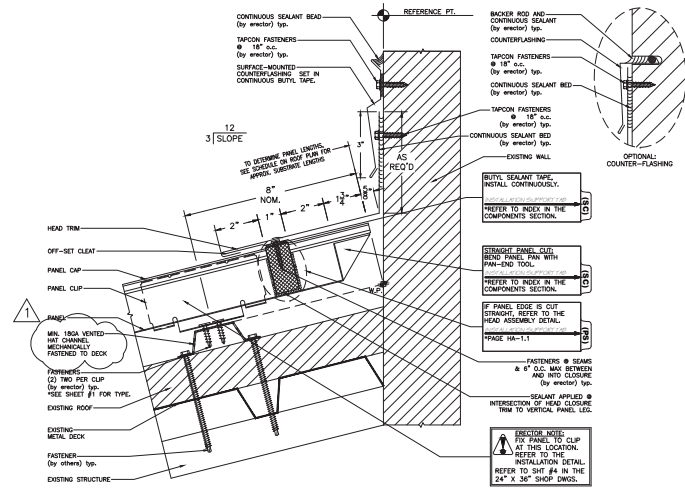
- THE FIXED PANEL LOCATIONS ILLUSTRATED ON THE ROOF PLAN DESCRIBE A "FIXED LOCATION" BETWEEN THE PANEL AND PANEL CLIP.
- THIS "FIXED LOCATION" IS A MECHANICAL CONNECTION BETWEEN THESE TWO COMPONENTS, PANEL AND PANEL CLIP.
- A "FIXED LOCATION" CAN ONLY OCCUR AT ONE LOCATION ON EACH PANEL.
- DO NOT ATTACH EACH PANEL CLIP TO THE PANEL.
- THE PANEL MUST BE FIXED (MECHANICAL ATTACHED) AT ONE LOCATION AND ALL REMAINING PANEL CLIPS ALONG THE PANEL MUST NOT BE ATTACHED.
- THIS THERMAL MOVEMENT IS EXPANSION AND CONTRACTION OF THE PANEL ALONG ITS' ENTIRE LENGTH.

2-Rivet Fixed Panel Detail

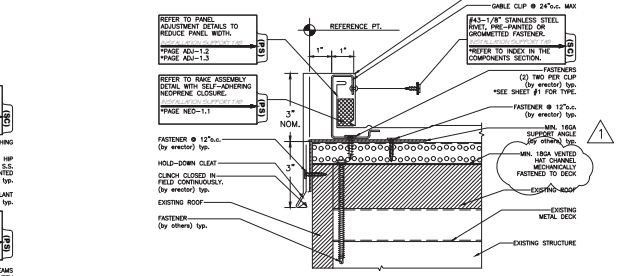
SEE ROOF PLAN FOR CORRECT PLACEMENT OF THE PANEL'S FIXED LOCATIONS. IF THIS IS UNCLEAR IN ANY MANNER, DO NOT INSTALL PANELS AND CONTACT THE MANUFACTURER OR MANUFACTURER'S REPRESENTATIVE FOR CLARIFICATIONS.



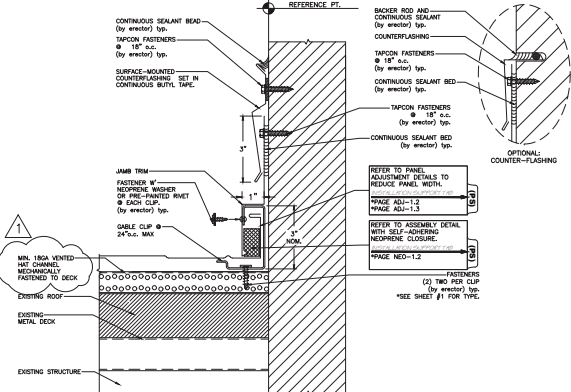
A FIXED HEAD DETAIL
4 ARCH. REF. : NA



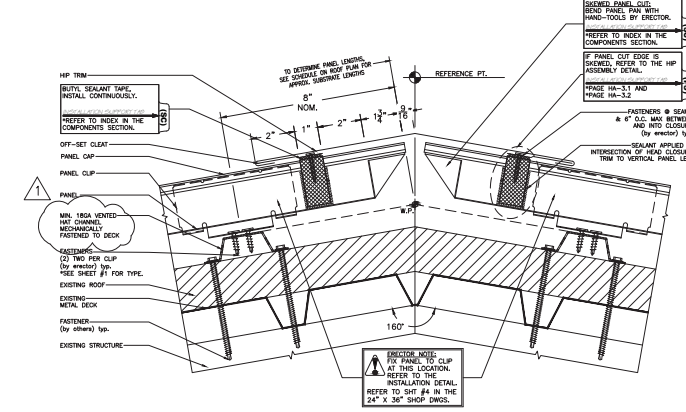
B FIXED HIP DETAIL
4 ARCH. REF. : NA



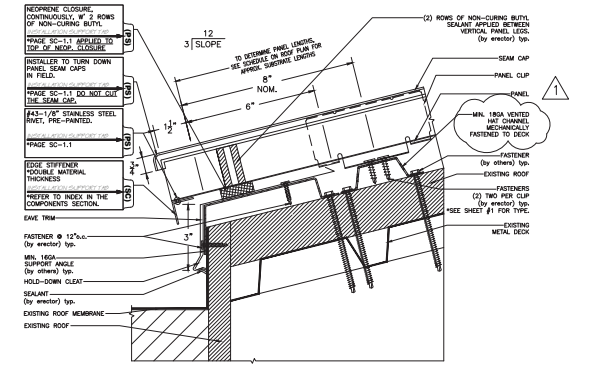
E RAKE DETAIL
4 ARCH. REF. : NA



F SLOPING JAMB DETAIL
4 ARCH. REF. : NA



C EXPANDING EAVE DETAIL
4 ARCH. REF. : NA



G EXPANDING EAVE DETAIL
4 ARCH. REF. : NA

D FIXED CAP FLASHING DETAIL
4 ARCH. REF. : NA

REV: 1 DATE: 02/18/25
 2 DATE: ---/---/---
 3 DATE: ---/---/---
 4 DATE: ---/---/---

CUSTOMER: NA
 AGENT: RYAN BENSON
 ARCHITECT: NA
 DATE: 01/06/25
 DWG BY: MEC
 CHK BY: ---

LAKE LAND COLLEGE-FIELD HOUSE
 5009 LAKE LAND BLVD., MATTON, IL 61938

Salvatore R. Granata, P.E., S.E.
 (878) 367-3151
 146 Lee Road 2012
 Opelika, AL 36804
 Fax: 866-815-4852
 salvatorer.com

THE GARLAND COMPANY INC.
 3800 EAST 91st STREET - CLEVELAND, OHIO 44105-2197
 PHONE (800) 321-9336 / FAX (216) 641-0633

SHEET: 4 OF 5 JOB NUMBER: 40257



PART	HEAD TRIM	S/O	TRIM INCH
QTY	6 PCS		X 120"
MTL	GALV. STEEL	22GA	

CUSTOMER APPROVAL	
DETAIL	LIN. FT
A/4	±51
TOTAL ±51	

PART	OFF SET CLEAT	S/O	TRIM INCH
QTY	242 PCS		X 120"
MTL	GALV. STEEL	22GA	

CUSTOMER APPROVAL	
DETAIL	LIN. FT
A/4	±51
B/4	±2364
TOTAL ±2415	

PART	COUNTERFLASHING	S/O	TRIM INCH
QTY	7 PCS		X 120"
MTL	GALV. STEEL	22GA	

CUSTOMER APPROVAL	
DETAIL	LIN. FT
A/4	±51
F/4	±12
TOTAL ±63	

PART	HIP TRIM	S/O	TRIM INCH
QTY	119 PCS		X 120"
MTL	GALV. STEEL	22GA	

CUSTOMER APPROVAL	
DETAIL	LIN. FT
B/4	±1182
TOTAL ±1182	

PART	RAKE TRIM	S/O	TRIM INCH
QTY	2 PCS		X 120"
MTL	GALV. STEEL	22GA	

CUSTOMER APPROVAL	
DETAIL	LIN. FT
E/4	±20
TOTAL ±20	

PART	HOLD DOWN CLEAT	S/O	TRIM INCH
QTY	143 PCS		X 120"
MTL	GALV. STEEL	22GA	

CUSTOMER APPROVAL	
DETAIL	LIN. FT
C/4	±1229
E/4	±20
G/4	±174
TOTAL ±1423	

PART	EAVE TRIM	S/O	TRIM INCH
QTY	141 PCS		X 120"
MTL	GALV. STEEL	22GA	

CUSTOMER APPROVAL	
DETAIL	LIN. FT
C/4	±1229
G/4	±174
TOTAL ±1403	

PART	EDGE STIFFENER	S/O	TRIM INCH
QTY	141 PCS		X 120"
MTL	GALV. STEEL	22GA	

CUSTOMER APPROVAL	
DETAIL	LIN. FT
C/4	±1229
G/4	±174
TOTAL ±1403	

PART	CAP FLASHING	S/O	TRIM INCH
QTY	V.I.F		X 120"
MTL	GALV. STEEL	22GA	

CUSTOMER APPROVAL	
DETAIL	LIN. FT
D/4	V.I.F
TOTAL V.I.F	

PART	JAMB TRIM	S/O	TRIM INCH
QTY	2 PCS		X 120"
MTL	GALV. STEEL	22GA	

CUSTOMER APPROVAL	
DETAIL	LIN. FT
F/4	±12
TOTAL ±12	

REV: 1	DATE: 02/18/25
2	DATE: ---/---/---
3	DATE: ---/---/---
4	DATE: ---/---/---

LAKE LAND COLLEGE-FIELD HOUSE
5009 LAKE LAND BLVD., MATTON, IL 61938

ARCHITECT: NA
DATE: 01/06/25
DWG BY: MEC
CHK BY: --

PM: AMANDA TANT
AGENT: RYAN BENSON
CUSTOMER: NA

Salvatore R. Granata, P.E., S.E.
 (773) 367-3151
 Phone: (773) 367-3151
 Fax: 866-815-4852
 146 Lee Road 2012
 Opeta, AL 36854
 salvatorer.com
 Toll Free: (877) 946-5726



THE GARLAND COMPANY INC.
 3800 EAST 91st STREET - CLEVELAND, OHIO 44105-2197
 PHONE (800) 321-9336 / FAX (216) 641-0633

